

# CADETS BATTLE DRESS UNIFORM

MALES AND FEMALES WEAR THE UNIFORM IN THE SAME MANNER. FOR DETAILS ABOUT UNIFORMS, USE THE UNIFORM MANUAL (CAPM 39-1).



## CAP Insignia

Cadets without grade wear device on both collars, 1" from bottom edge.



## Grade Insignia

Cadet enlisted members wear metal chevrons centered on collar, 1" from bottom edge.



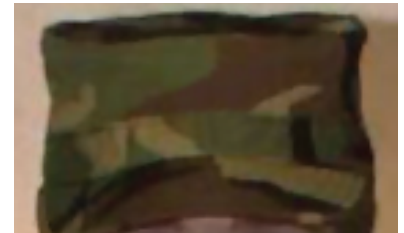
## Name Tag

Centered on right breast, resting on, but not over, top edge of pocket.



## CAP Tape

Centered on left breast, resting on, but not over, top edge of pocket.



## Hat Insignia

Cadet enlisted members and cadets without grade do not wear any device on the BDU hat. Hat will not be rolled or crushed.



## American Flag

Reverse American Flag is worn on right shoulder, 1/2" below sleeve seam, centered.



## Sleeves

When up, sleeve material must touch or come within 1" of forearm when bent at 90-degree angle.



## Pants

Pants must be bloused over combat boots.